




## 10/100Base-TX to 100Base-FX with LFP Fiber Optic Media Converter

OP-ECxx1xxx-xx -LFP



Shenzhen Optostar Optoelectronics Co., Ltd

2013. 2 (Version 2)

<b>Item</b>	<b>Fiber Media Converter</b>
<b>Model No.</b>	<b>OP-ECx11xxx-xx -LFP</b>
<b>Description</b>	<b>10/100Base-TX to 100Base-FX with LFP USB Powered</b>
	

## Overview

OP-ECxx1xxx-xx-LFP 10/100M Fiber Media Converter translates the signal from a twist-pair 10/100Base-TX cable to 100Base-FX fiber optic cable, extends data transmission distance from 100m via copper cables to 120km by fiber optic cable, which supports LFP (Link Fault Pass-through) function & USB Powered.

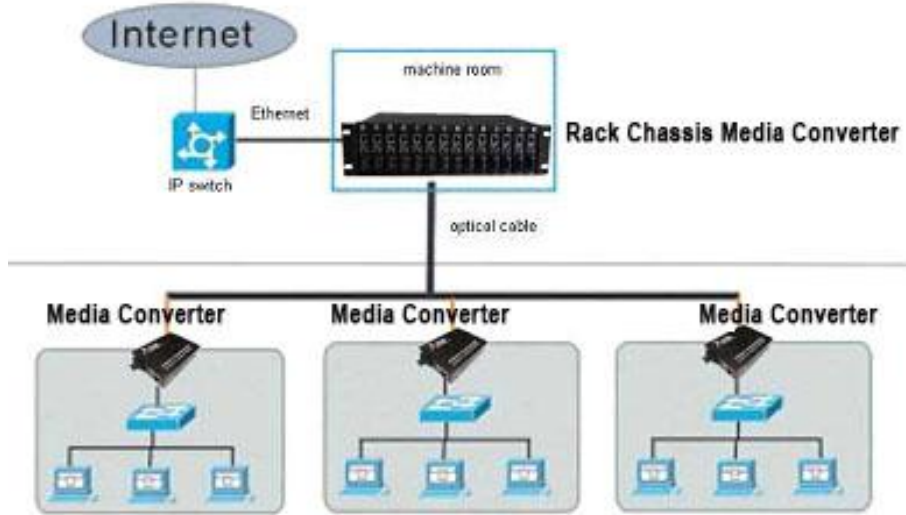
## Features

- 10/100Mbps auto-sensed, easily upgrade
- Full-duplex and half-duplex auto-sensed
- MDI/MDI-X Auto Negotiation
- 10/100Mbps store-and-forward
- 100Mbps cut-through transmission
- Supporting VLAN / VoIP /QoS packets
- Support flow control and reduce broadcast packets
- Supporting STP to form a redundant network
- Extremely low power consumption, low heat, stable performance
- Providing Desktop, Wall-mounted, Chassis, DIN-rail installation
- **LFP (Link Fault Pass-through) Function**
- External Power Adapter or USB power source
- **DIP Switch to set configurations**
- Supporting extra-long packets up to 1600 bytes

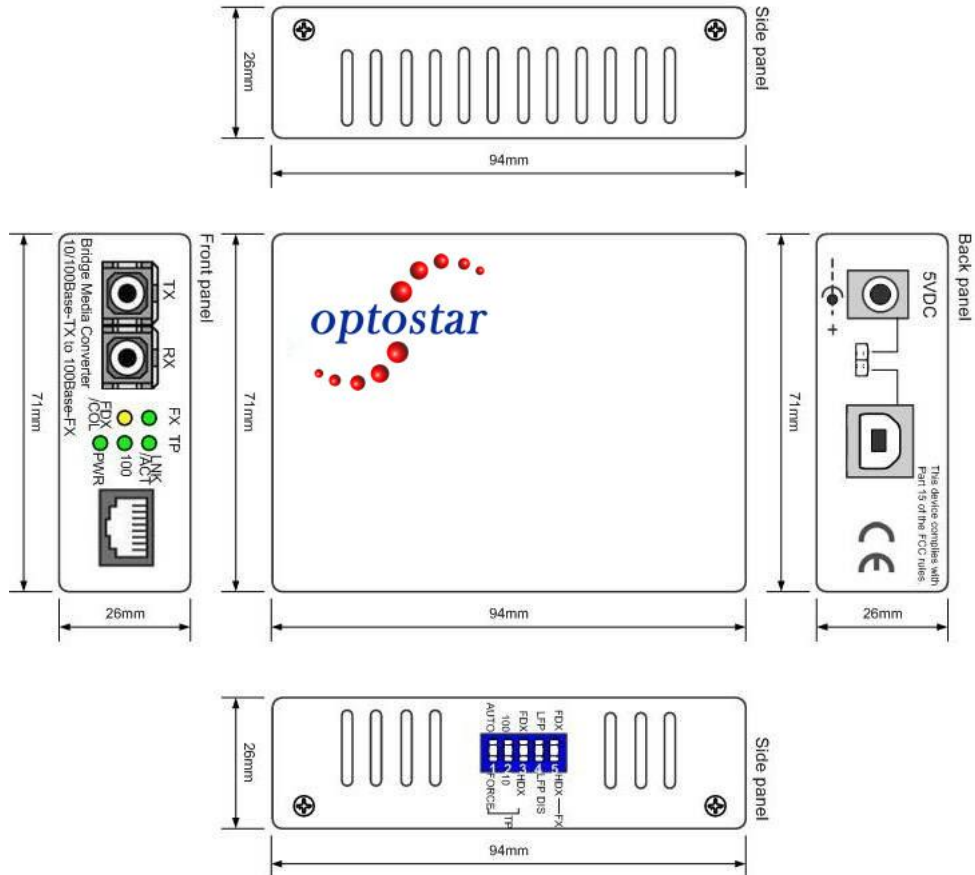
### Application

1. Network Communication
2. FTTH / FTTB / FTTx
3. ISP Backhaul Networking

### media converter solution



### Mechanical Dimensions



### Technical Indexes

Standard	IEEE802.3 10Base-T Ethernet, IEEE802.3u 100Base-TX/FX Fast Ethernet
Data Rate	Copper: 10/100M; Fiber: 155M
Flow control	Full duplex: flow control; Half duplex: back pressure
Copper Port	No.s of Copper Port: 1 Connector: RJ45 Connector Distance:100m
Fiber Port	No.s of Fiber Port: 1 Connector: SC as default, FC/ST optional Wavelength: MMF 1310nm, SMF: 1310nm, Bi-di 1310/1550nm Distance: MMF 2Km, SMF 20/40/80/100/120Km, Bi-di 20/40/80/100Km
LED indicators	PWR (power supply); FL/A (optical link/action) FDX (FX full duplex), TL/A (twisted pairs link/action) 100 (100M transmission rate of twisted pairs), FX (100M transmission rate of optical fiber)
DIP Switch	TP port mode: Auto (default) or Force TP port speed: 100 or 10 when TP at Force TP port duplex: FDX or HDX when TP at Force LFP: LFP enabled (default) or disabled Fiber port duplex: 100 FDX (default) or 100 HDX
Power supply	Working power: DC5V 1A AC Power Supply: 100V~ AC240V to 5V1A Or DC Power Supply: -36~-72V to 5V1A External / Internal Power Supply Optional
Power consumption	<2W
Environment	Operating temperature : -10~55°C Storage Temperature: -40~85°C Relative Humidity: 5% to 95% non-condensing
Dimensions	External: 94mmx70mm*26mm Internal: 140mmx110mmx30mm
Gross Weight	External : 0.4kg Internal: 0.5kg

### Order Information

Model No.	Data Rate	Fiber Mode	Wavelength	Fiber Connector	Distance	Power Supply
OP-ECM11211-2-LFP	10/100M	MMF	1310nm	SC	2km	Ex.AC220V
OP-ECS11211-20-LFP	10/100M	SMF	1310nm	SC	20km	Ex.AC220V
OP-ECS11211-40-LFP	10/100M	SMF	1310nm	SC	40km	Ex.AC220V
OP-ECS11511-20-LFP	10/100M	Bi-di	TX1310/RX1550nm	SC	20km	Ex.AC220V
OP-ECS11711-20-LFP	10/100M	Bi-di	TX1550/RX1310nm	SC	20km	Ex.AC220V
OP-ECS11511-40-LFP	10/100M	Bi-di	TX1310/RX1550nm	SC	40km	Ex.AC220V
OP-ECS11711-40-LFP	10/100M	Bi-di	TX1550/RX1310nm	SC	40km	Ex.AC220V
OP-ECM31211-2-LFP	10/100M	MMF	1310nm	SC	2km	Ex.DC48V
OP-ECS31211-20-LFP	10/100M	SMF	1310nm	SC	20km	Ex.DC48V
OP-ECS31211-40-LFP	10/100M	SMF	1310nm	SC	40km	Ex.DC48V
OP-ECS31511-20-LFP	10/100M	Bi-di	TX1310/RX1550nm	SC	20km	Ex.DC48V
OP-ECS31711-20-LFP	10/100M	Bi-di	TX1550/RX1310nm	SC	20km	Ex.DC48V
OP-ECS31511-40-LFP	10/100M	Bi-di	TX1310/RX1550nm	SC	40km	Ex.DC48V
OP-ECS31711-40-LFP	10/100M	Bi-di	TX1550/RX1310nm	SC	40km	Ex.DC48V

### Relative Product

16 Slot Chassis System for Card Type						
OP-F11-220	16 Slot Chassis with double AC220V Power Supply, for Card Type					
OP-F11-48	16 Slot Chassis with double DC48V Power Supply, for Card Type					
OP-ECM51211-2	10/100M	MMF	1310nm	SC	2km	Card
OP-ECS51211-20	10/100M	SMF	1310nm	SC	20km	Card
OP-ECS51511-20	10/100M	Bi-di	TX1310/RX1550nm	SC	20km	Card
OP-ECS51711-20	10/100M	Bi-di	TX1550/RX1310nm	SC	20km	Card
14 Slot Chassis System For Standalone Type						
OP-F12-220	14 Slot Chassis with double AC220V Power Supply, for standalone type					
OP-F12-48	14 Slot Chassis with double DC48V Power Supply, for standalone type					
OP-ECM11211-2	10/100M	MMF	1310nm	SC	2km	Standalone
OP-ECM11211-20	10/100M	SMF	1310nm	SC	20km	Standalone
OP-ECM11511-20	10/100M	Bi-di	TX1310/RX1550nm	SC	20km	Standalone
OP-ECM11711-20	10/100M	Bi-di	TX1550/RX1310nm	SC	20km	Standalone

## Contact OPTOSTAR

Shenzhen Optostar Optoelectronics Co., Ltd.

A-14,Haide Building, Nanxin Road Nanshan District,Shenzhen,P.R.China

Email:info@optostar.com.cn 0086-755-26400198/0086-0755-26400288 Fax:0086-755-26411001



**Shenzhen Optostar Optoelectronics Co., Ltd**

Address:A-14,Haide Building,the Intersection of Nanxin Road and Haide Second Road Nanshan District Shenzhen,China .

Tel: +86-755-26400198 +86-755-26400288 Fax: +86-755-26411001

Email: [info@optostar.com.cn](mailto:info@optostar.com.cn)

Skype:ouyangroya

Web: [www.optostar.com.cn](http://www.optostar.com.cn)